

ShepHertz

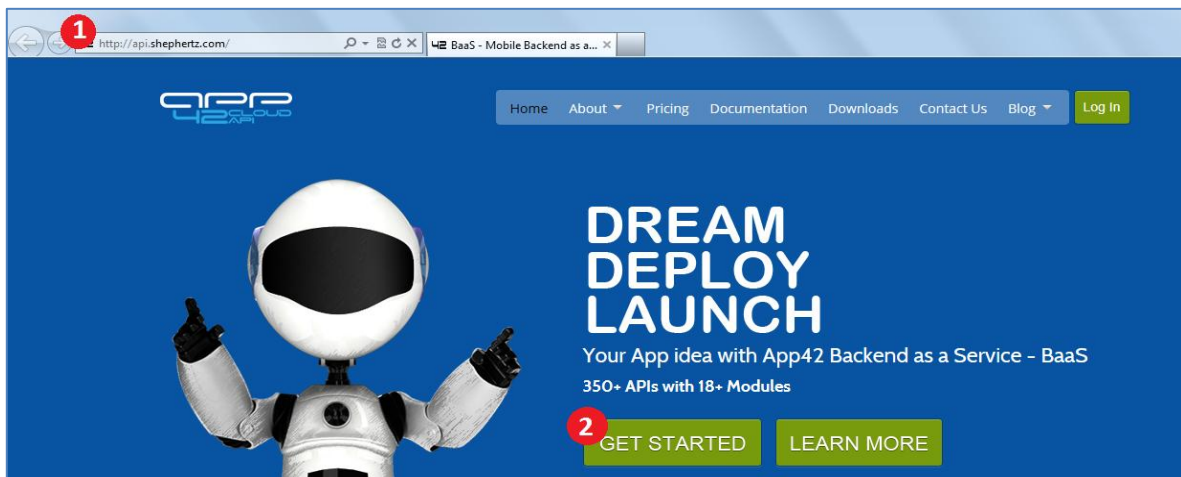


SDK Tutorial

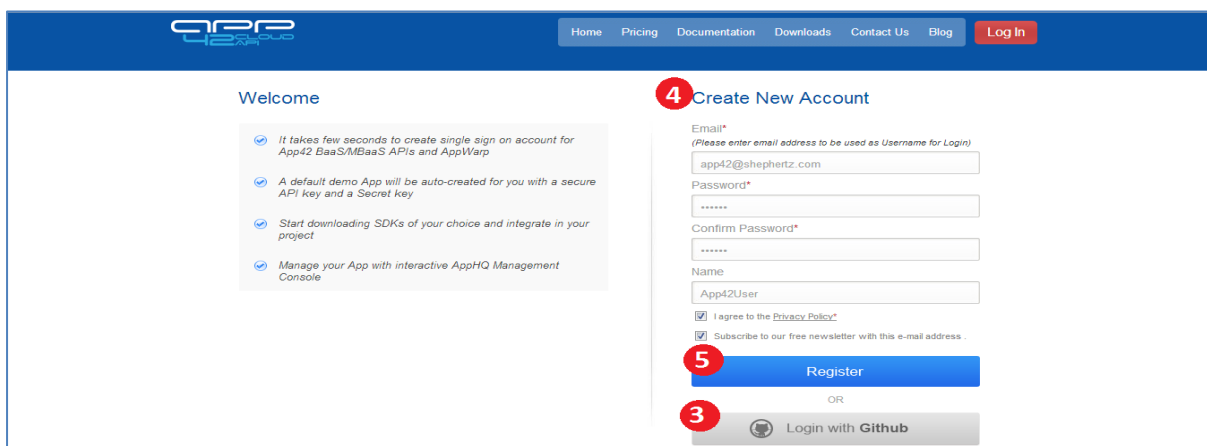
Welcome to App42 Cloud API, one stop shop for complete Backend as a Service (BaaS) solution for App developers!

Here are the steps to help you get started with your Mono (MonoTouch & Monodroid) SDK to be integrated with your App.

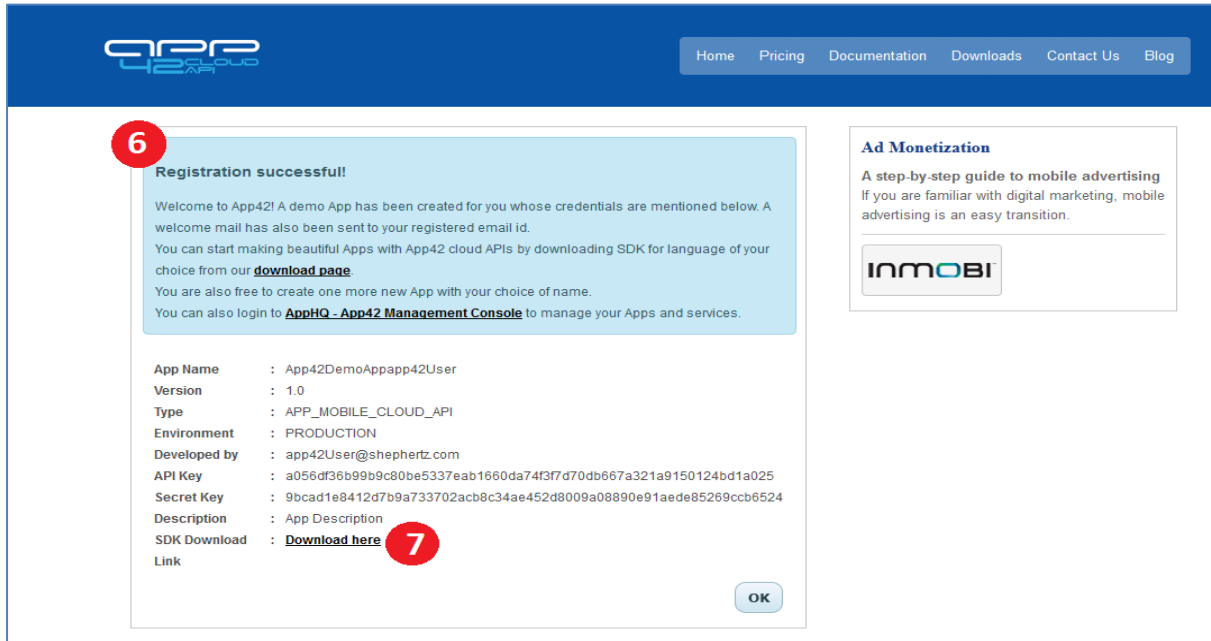
1. Go To <http://api.shephertz.com>.
2. Click on **Get Started** button.



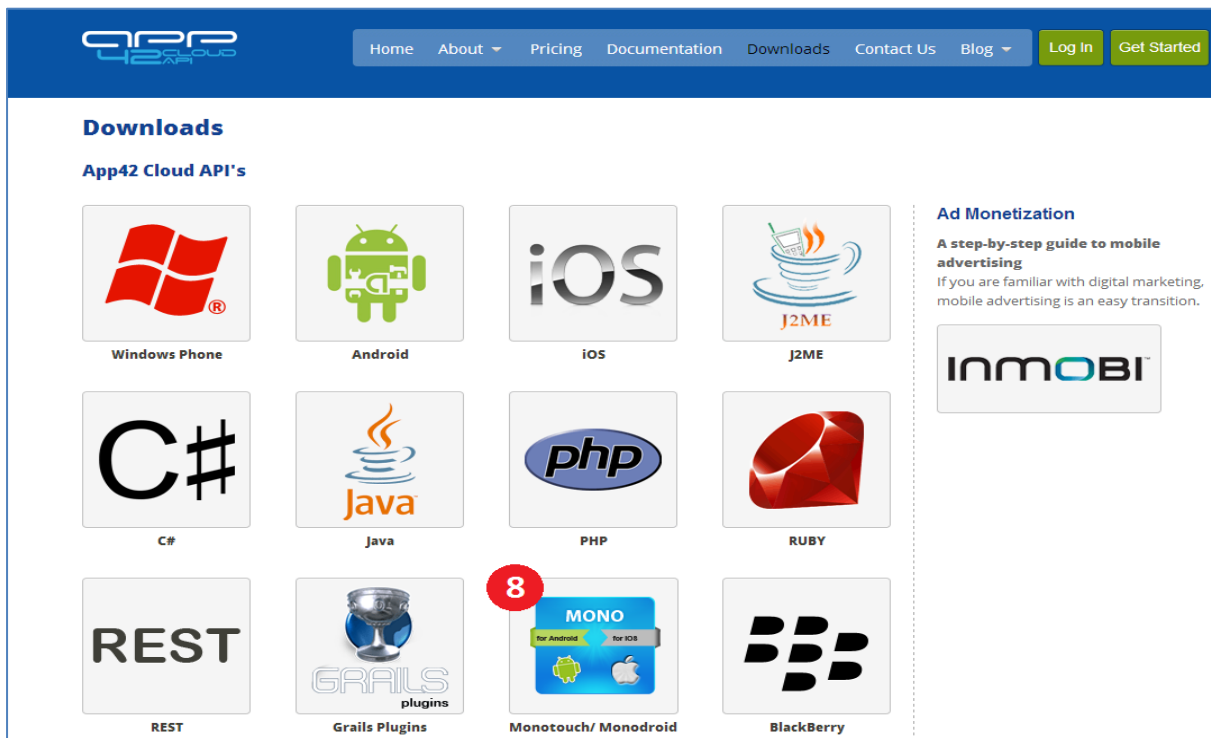
3. **Login with Github** account.
OR
4. Create your App42 account by providing us your contact information. It just takes few seconds.
5. Enter your details and click **Register** button.



- On successful registration, a demo App will be created and apiKey and secretKey for the same will be generated. Intention of demo App is to make user experience seamless to use the APIs.
- Click the [Download here](#) link.



- From [Downloads](#), select the [Mono](#) icon to download the SDK.



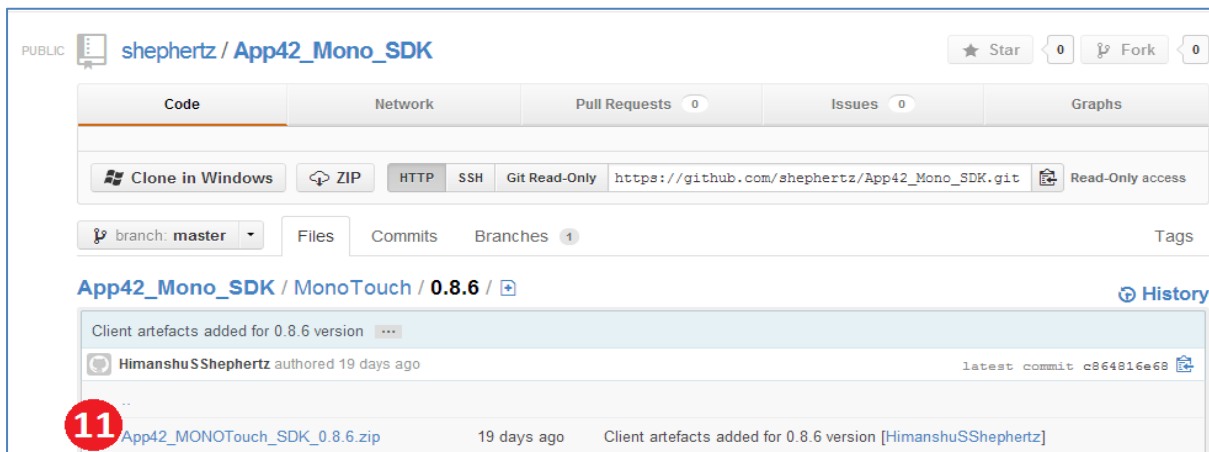
9. Click on **Download** button.



10. Select the version of Mono SDK to download such as MonoTouch in this case:

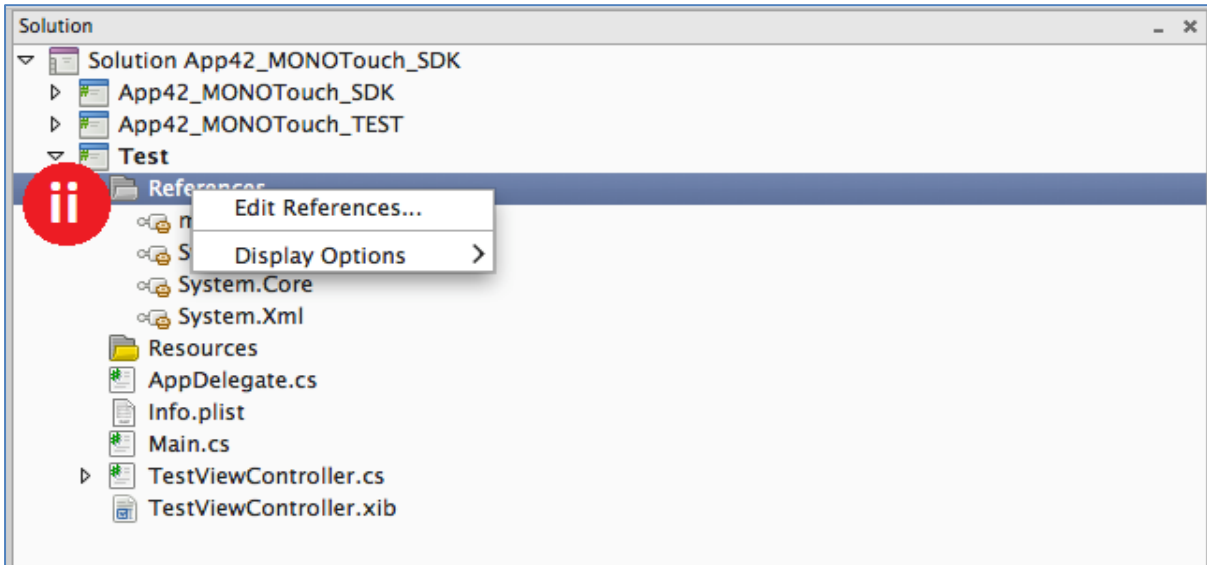


11. Save the SDK zip file and unzip on your local system. Unzip file will contain docs and sample folder which can be referred for detailed usage of SDK.

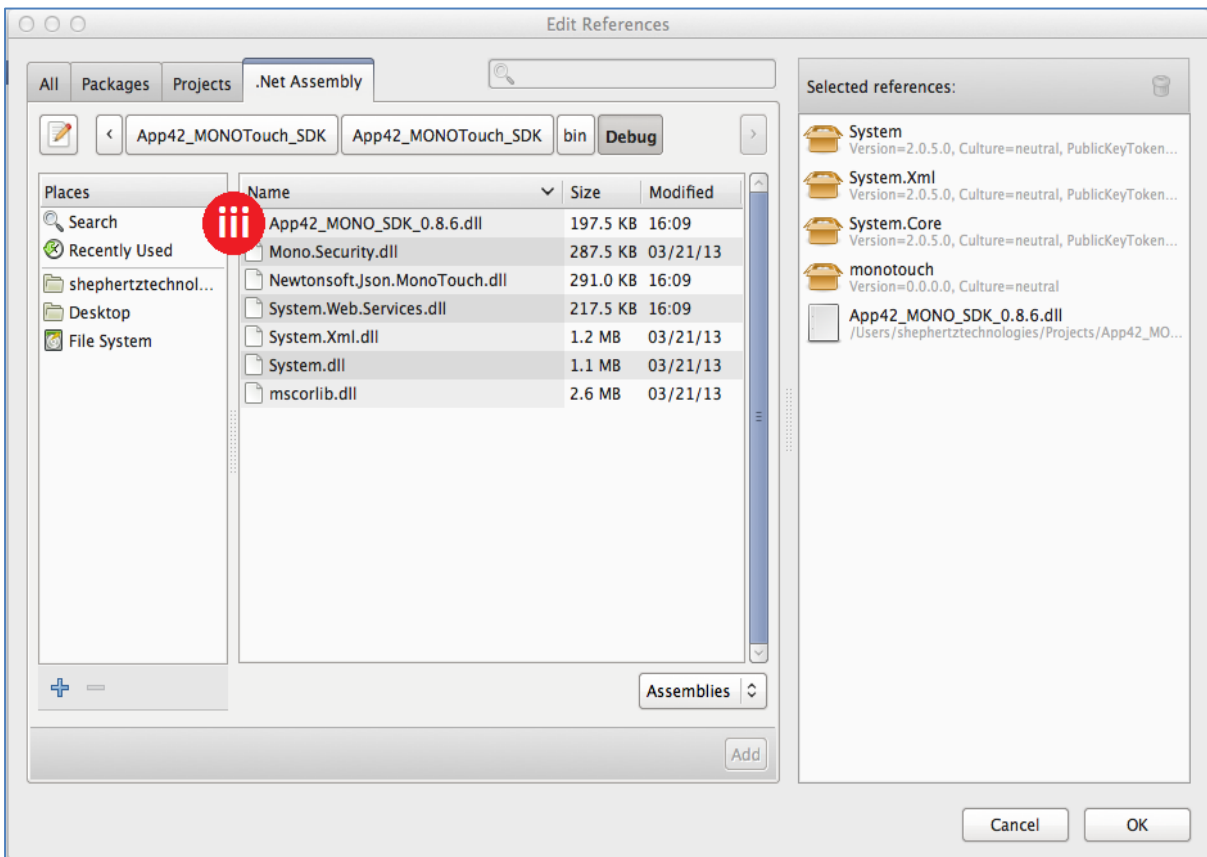


12. Integrate downloaded SDK with your Mono project:

- i. Right click on the project's reference folder.
- ii. Select **Edit Reference** option.



- iii. Select the `App42_MONO_SDK_x.x.x.dll` file contained in the `lib` folder to add it into your project.



- iv. Insert the following using statements in your project:

```
using com.shephertz.app42.paas.sdk.csharp;
using com.shephertz.app42.paas.sdk.csharp.user;
```

- v. Find the sample code as mentioned below:

```
String userName = "Nick";
String pwd = "*****";
String emailId = "nick@shephertz.com";

ServiceAPI api = new ServiceAPI("<API_KEY>", "<SECRET_KEY>");
UserService userService = api.BuildUserService();

User user = userService.CreateUser(userName, pwd, emailId);
String jsonResponse = user.ToString();
```

- vi. Build your project and run.

Log in to [App42 Management Console- AppHQ](#) to manage your Apps.

Refer to our [Documentation](#) for other language specific Quick Guides.

For any queries, write to us at: support@shephertz.com.

