

ShepHertz



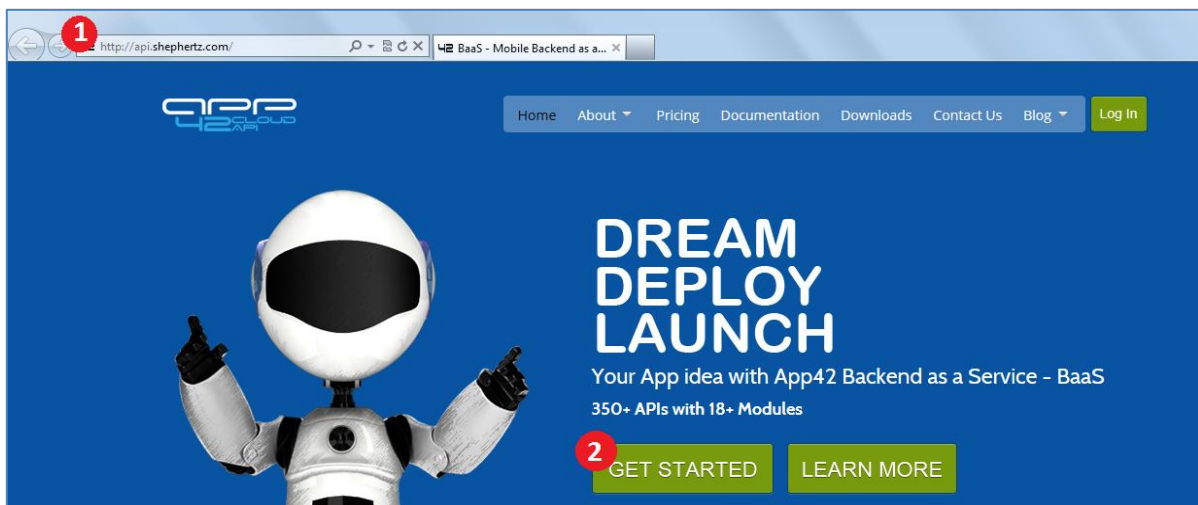
Java™

SDK Tutorial

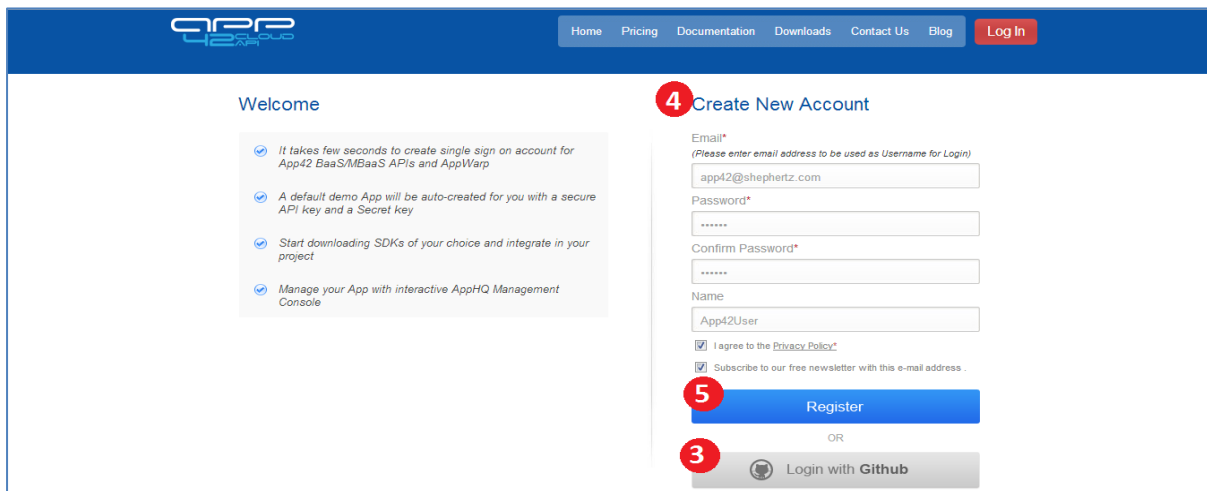
Welcome to App42 Cloud API, one stop shop for complete Backend as a Service (BaaS) solution for App developers!

Here are the steps to help you get started with your Java SDK to be integrated with your App.

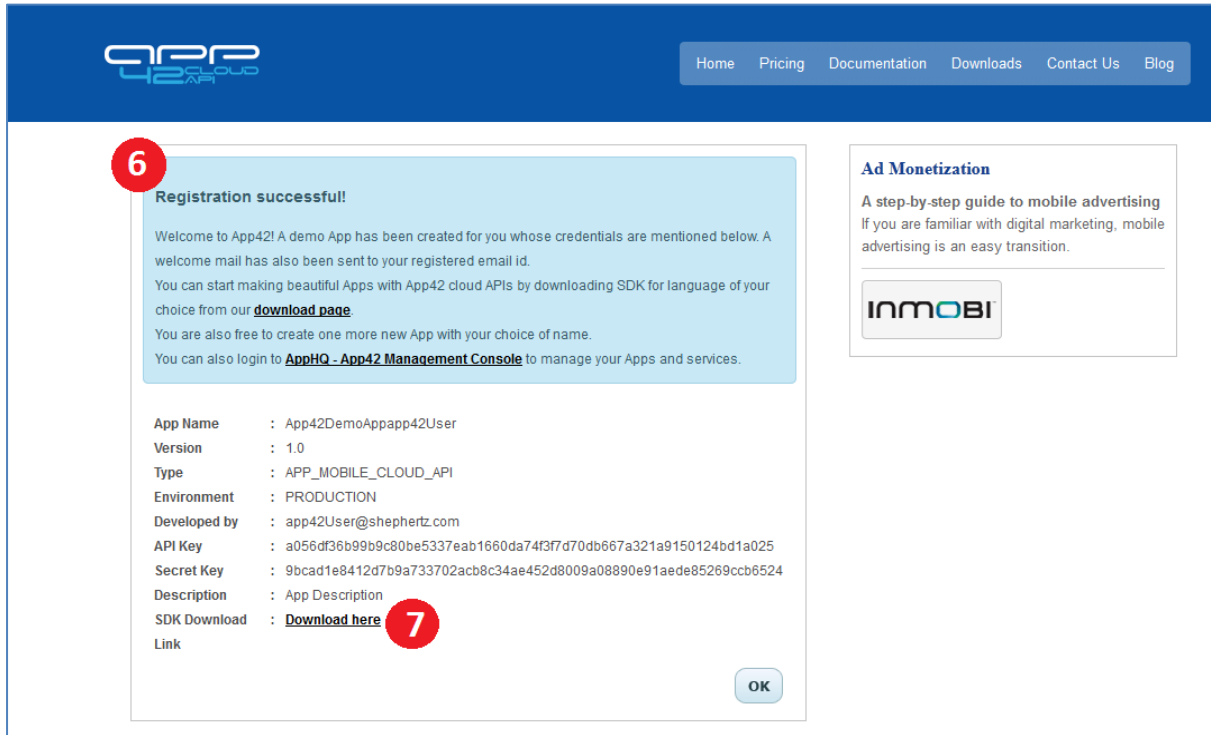
1. Go To <http://api.shephertz.com>.
2. Click on **Get Started** button.



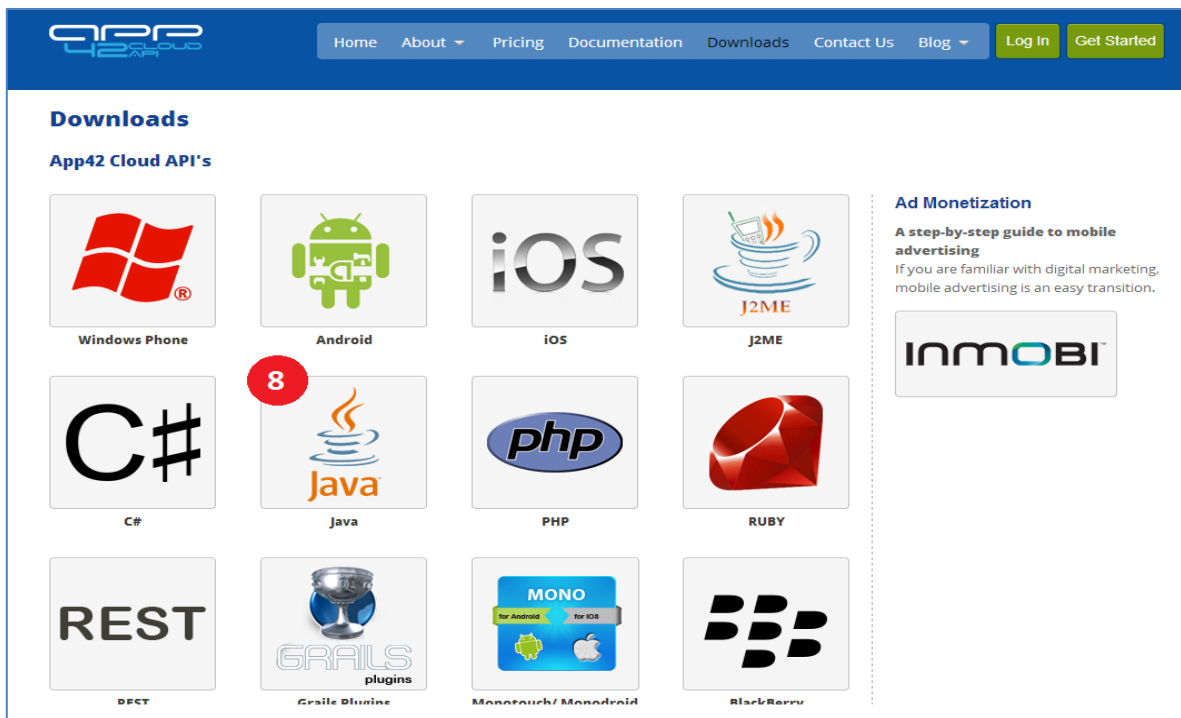
3. **Login with Github** account.
OR
4. Create your App42 account by providing us your contact information. It just takes few seconds.
5. Enter your details and click **Register** button.



- On successful registration, a demo App will be created and apiKey and secretKey for the same will be generated. Intention of demo App is to make user experience seamless to use the APIs.
- Click the [Download here](#) link.



- From [Downloads](#), select the [Java](#) icon to download its SDK.



9. Click on **Download** button.

Java - App42 Java Cloud API's

Java SDK library to develop Web, SaaS, Social and Enterprise applications. Build simple to complex applications in just a few minutes without having to worry about its complexities.

Manage your application and its data using [AppHQ - App42 Management Console](#)

Create an account, by just providing simple details and you're all set to go.

Below are some useful links to get you started

- Quick start guide for App42 beginners
- Java Developer Guide
- Java API's
- Videos - How to develop using Java SDK (Coming Soon)

9 Download Read Online

10. Select the version of Java SDK to download.

github Explore GitHub Search Features Blog

PUBLIC shephertz / App42_JAVA_SDK

★ Star 0 Fork 0

Code Network Pull Requests 0 Issues 0 Graphs

App42 Cloud API Client SDK JAR files for Java — Read more

Clone in Windows ZIP HTTP SSH Git Read-Only https://github.com/shephertz/App42_JAVA_SDK.git Read-Only access

branch: master Files Commits Branches 2 Tags

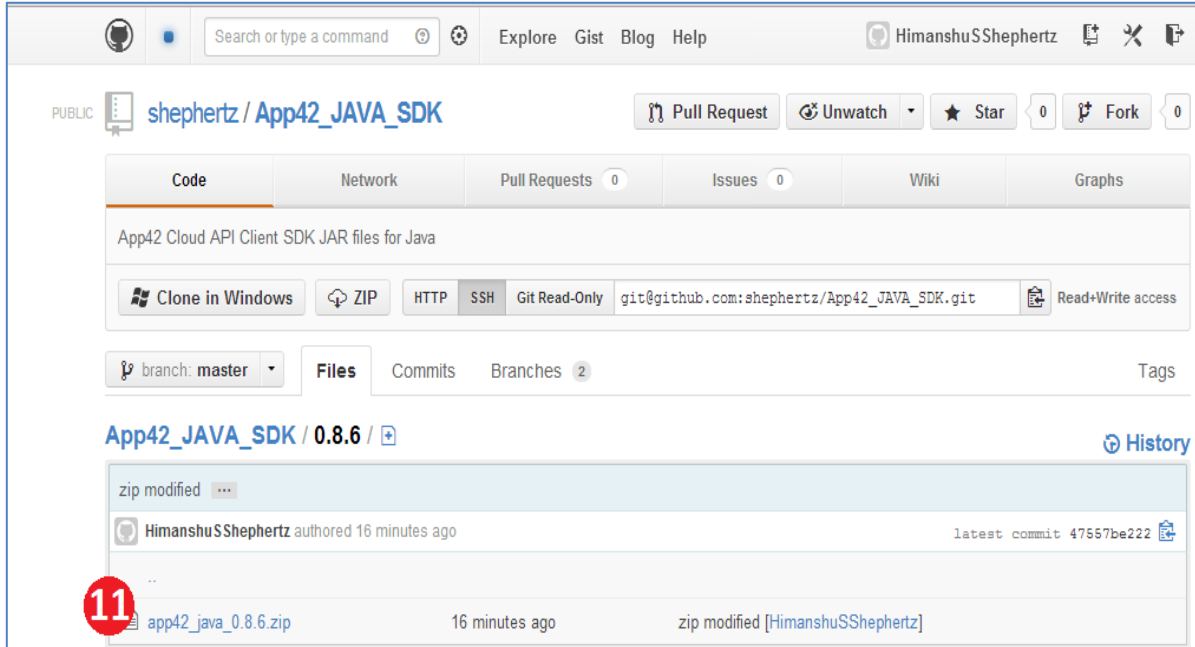
App42_JAVA_SDK / 10 commits

Client artifacts added for 0.8.6 version

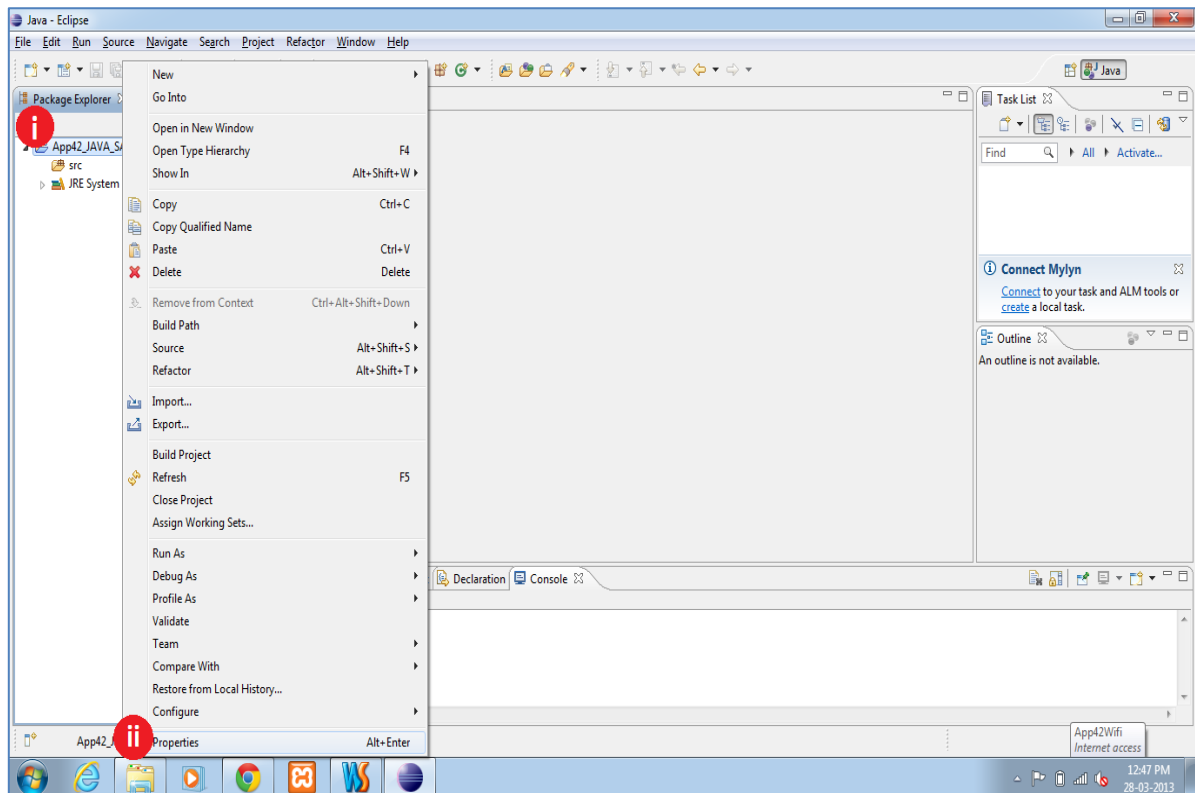
HimanshuSShephertz authored 9 days ago latest commit e13d7896de

0.6.0	6 months ago	Client artefacts added for 0.6.0, 0.7.0 & 0.8.0 version [NaveenGShephertz]
0.7.0	6 months ago	Client artefacts added for 0.6.0, 0.7.0 & 0.8.0 version [NaveenGShephertz]
0.8.0	6 months ago	Client artefacts added for 0.6.0, 0.7.0 & 0.8.0 version [NaveenGShephertz]
0.8.1.1	3 months ago	Sample File Modified [AjayTShephertz]
0.8.3	3 months ago	Client artifacts added for 0.8.3 version [ShashankSShephertz]
0.8.4	2 months ago	Client artifacts added for 0.8.4 version [ShashankSShephertz]
10 0.8.6	9 days ago	Client artifacts added for 0.8.6 version [HimanshuSShephertz]
README.md	2 months ago	Update README.md [ShashankSShephertz]

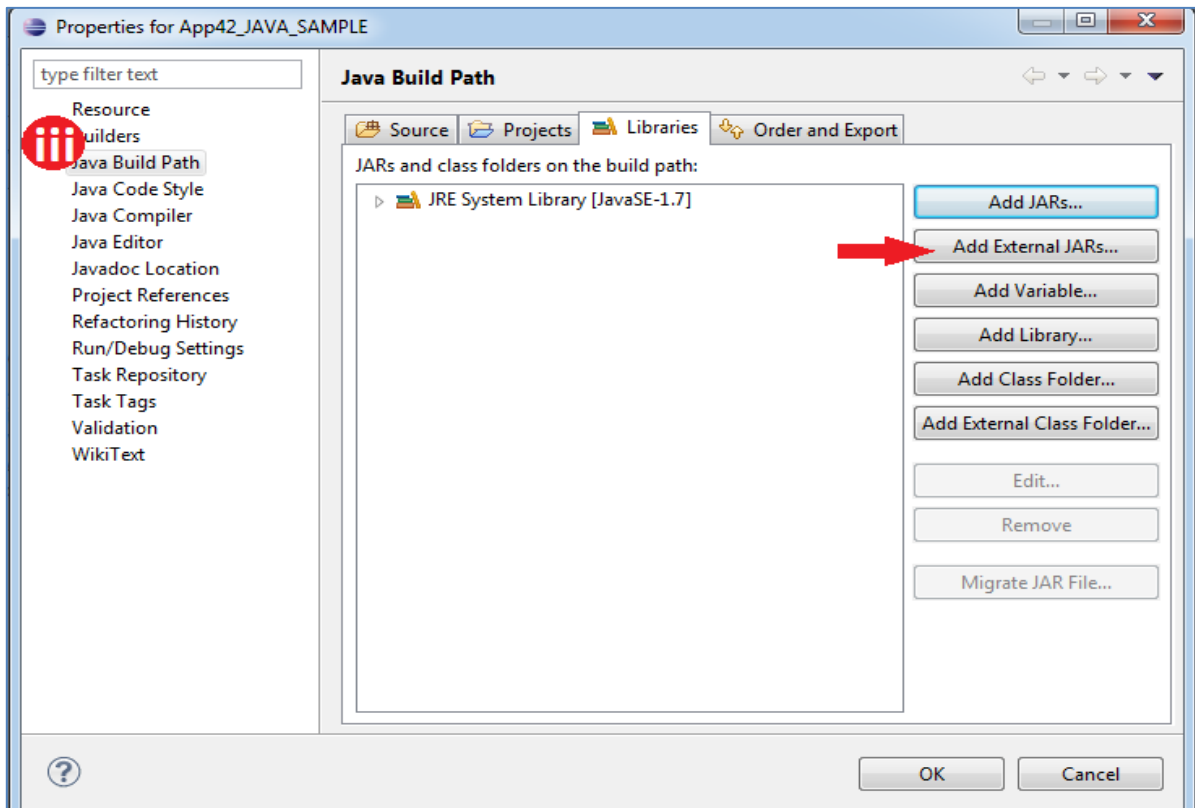
11. Save the SDK zip file and unzip on your local system. Unzip file will contain docs and sample folder which can be referred for detailed usage of SDK.



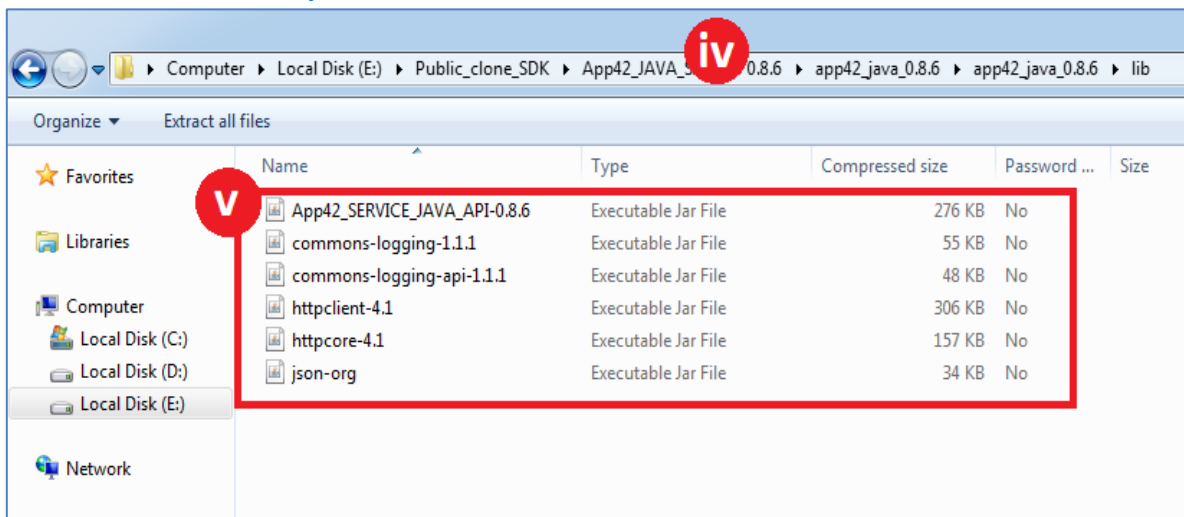
- i. Integrate downloaded SDK with your Java Project:
- ii. Right click on the project.
- iii. Select **Properties**.



- iv. Select a Java Build Path from the dialog box appeared on your screen and click **Add External JARs** button.



- v. Select the downloaded Jar to include in your project.
- vi. Select the files contained in the JAR to add them into your project code's reference library.



- vii. Insert the following import statements in your project:

```

import com.shephertz.app42.paas.sdk.java.ServiceAPI;
import com.shephertz.app42.paas.sdk.java.user.User;
import com.shephertz.app42.paas.sdk.java.user.UserService;
    
```

viii. Find the sample code as mentioned below:

```
String userName = "Nick";
String pwd = "*****";
String emailId = "nick@shephertz.com";

ServiceAPI api = new ServiceAPI("<API_KEY>", "<SECRET_KEY>");
UserService userService = api.buildUserService();

User user = userService.createUser(userName, pwd, emailId);
String jsonResponse = user.toString();
```

ix. Build your project and run.

Log in to [App42 Management Console- AppHQ](#) to manage your Apps.

Refer to our [Documentation](#) for other language specific Quick Guides.

For any queries, write to us at: support@shephertz.com.

